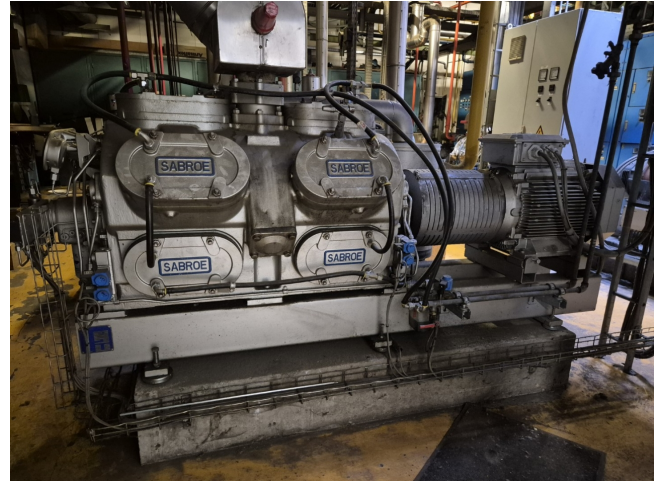


Sabroe SMC 112 L

Specifications

Marca	Sabroe
Tipo	SMC 112 L
Refrigerante	NH 3 (ammonia)
kW at +10°C/+40°C	1083,5*
kW at 0°C/+40°C	716,6*
kW at -5°C/+40°C	570,2*
kW at -10°C/+40°C	445,7*
Electromotor Specs	50 Hz - 45 kW - 1480 RPM
Piston Descargador	✓
Control de capacidad	✓
Sober Bancada	✓
Presostatos	✓
Manómetros de Presion	✓
Separador de aceite	✓
Mirilla	✓
Valvula Solenoide	✓
m3 / h	848
Comentarios	*Capacity based on a bigger electric motor
Stock	1



Description

Used Sabroe SMC 112 L

Used Sabroe SMC 112 L reciprocating compressor on R717 (Ammonia). Complete with a ABB M3BP 225 electric motor - 50 Hz - 45 kW - 1480 RPM, oil separator, pressure and safety switches/gauges. The compressor has a displacement of 848 m³/h. *Capacity based on a bigger electric motor. *Why choose for HOSBV? Were not only the largest used refrigeration specialist in Europe, but also, we deliver all equipment including an extensive test, warranty and industrial cleaning. *Optional we can also perform a new paint job and arrange the logistics.

